



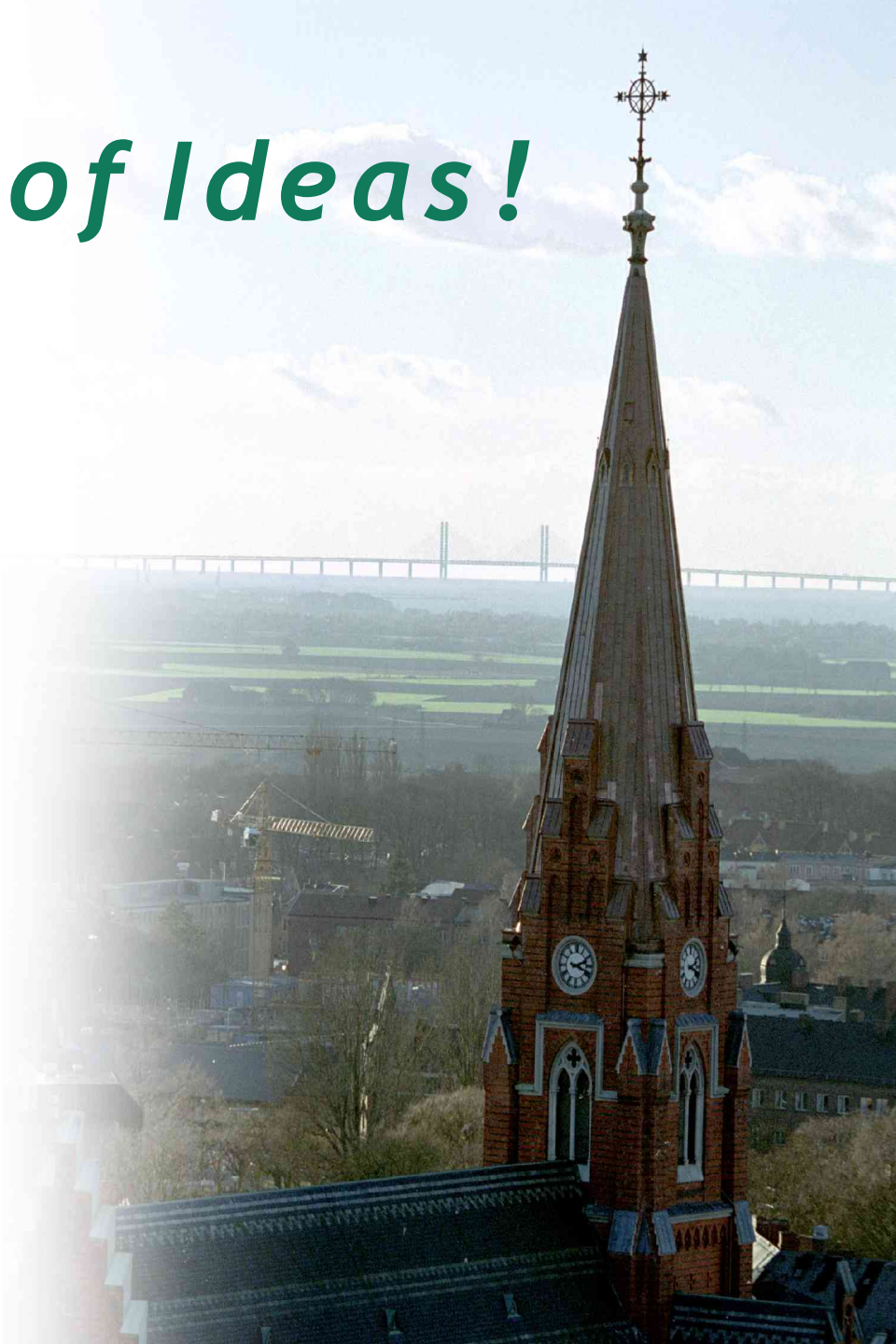
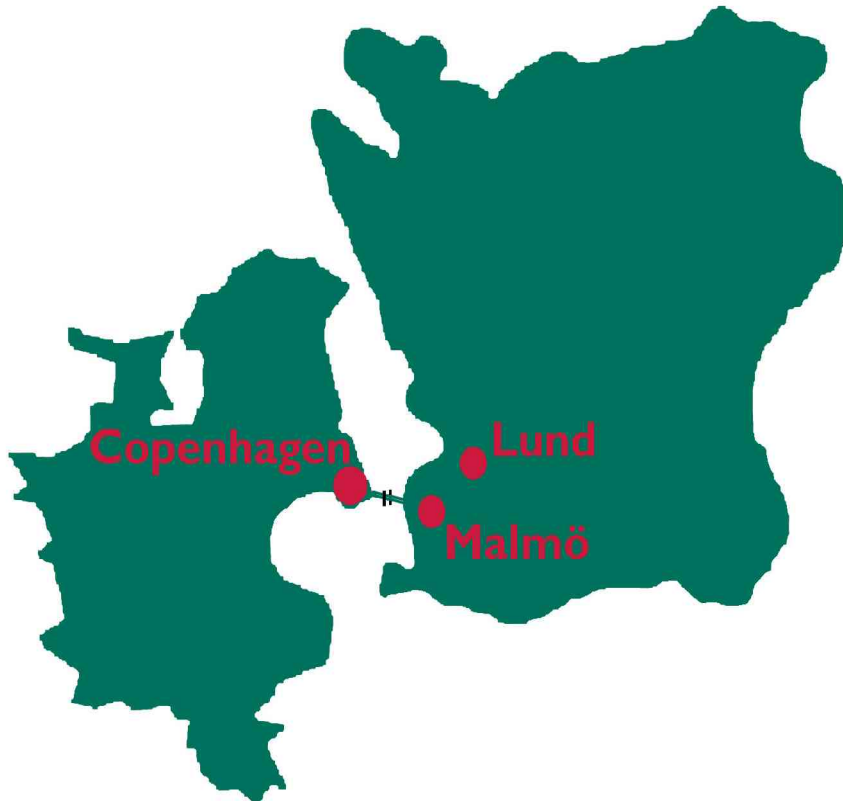
Study visit in Lund 20090513

Lundalänken - “the Lund link”





LUND - *City of Ideas!*





City of Lund

- population of 107 000
- young population
- twelfth largest municipality in Sweden
- 130 different nationalities
- 1000 years old





LUND - *City of Ideas!*

**The largest centre
for research and higher
education in Scandinavia**

- 34,000 students
- 3,100 research students
- 5,300 university employees





Everything within reach

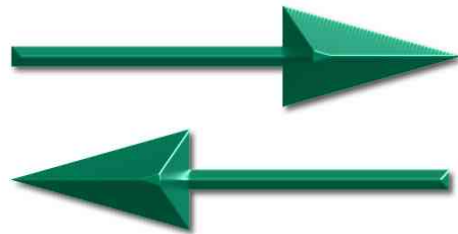
- Well developed public transport
- The countryside, places to go out and the university are within cycling distance
- Concentration of knowledge
- 50 minutes to Copenhagen
- 40 minutes to Kastrup Airport with more than 125 destinations around the world





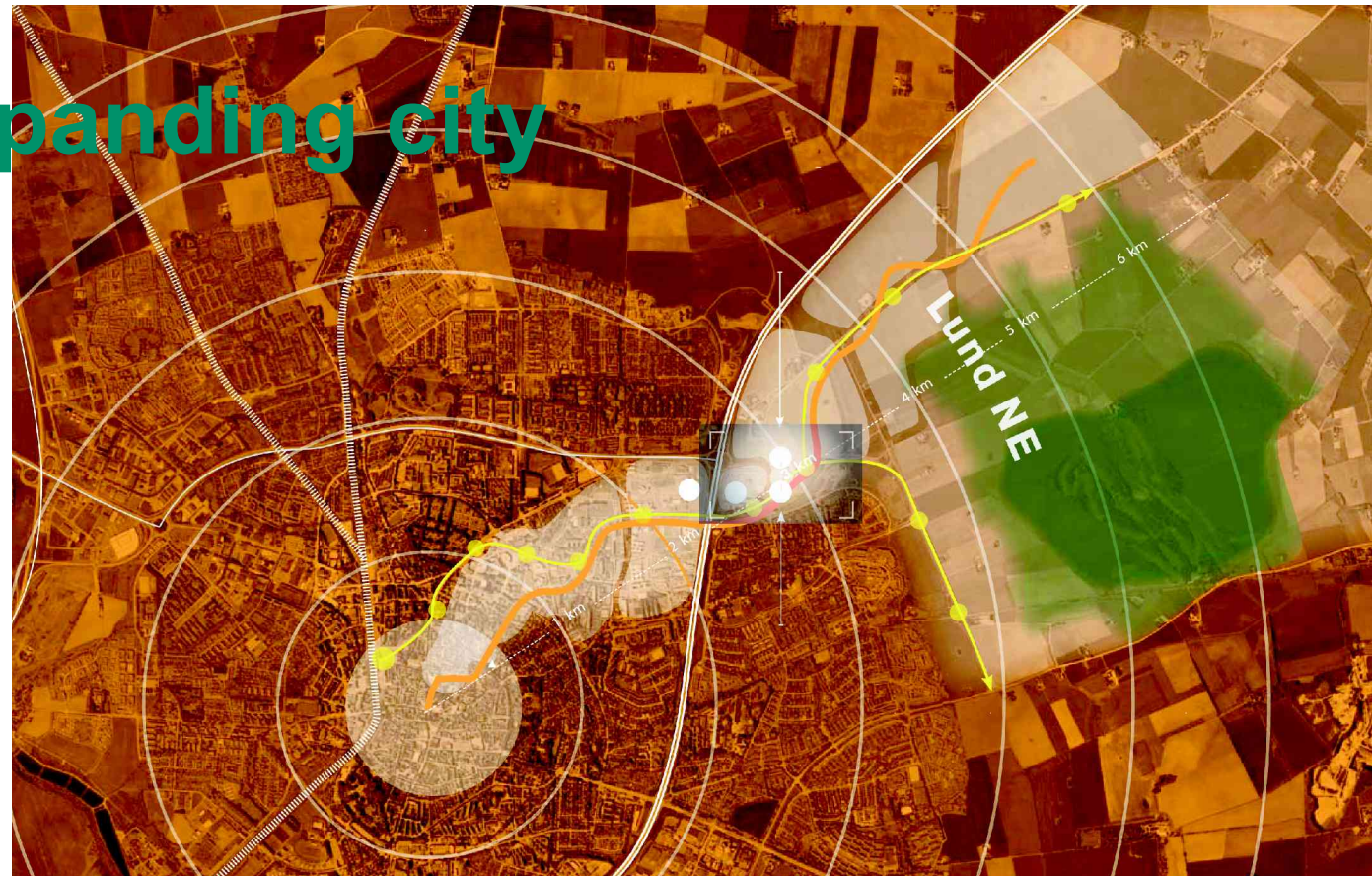
16 000 commuters out of Lund
30 000 commuters in to Lund

(35 000 people per day change their mode of transportation at Lund central station)





An expanding city



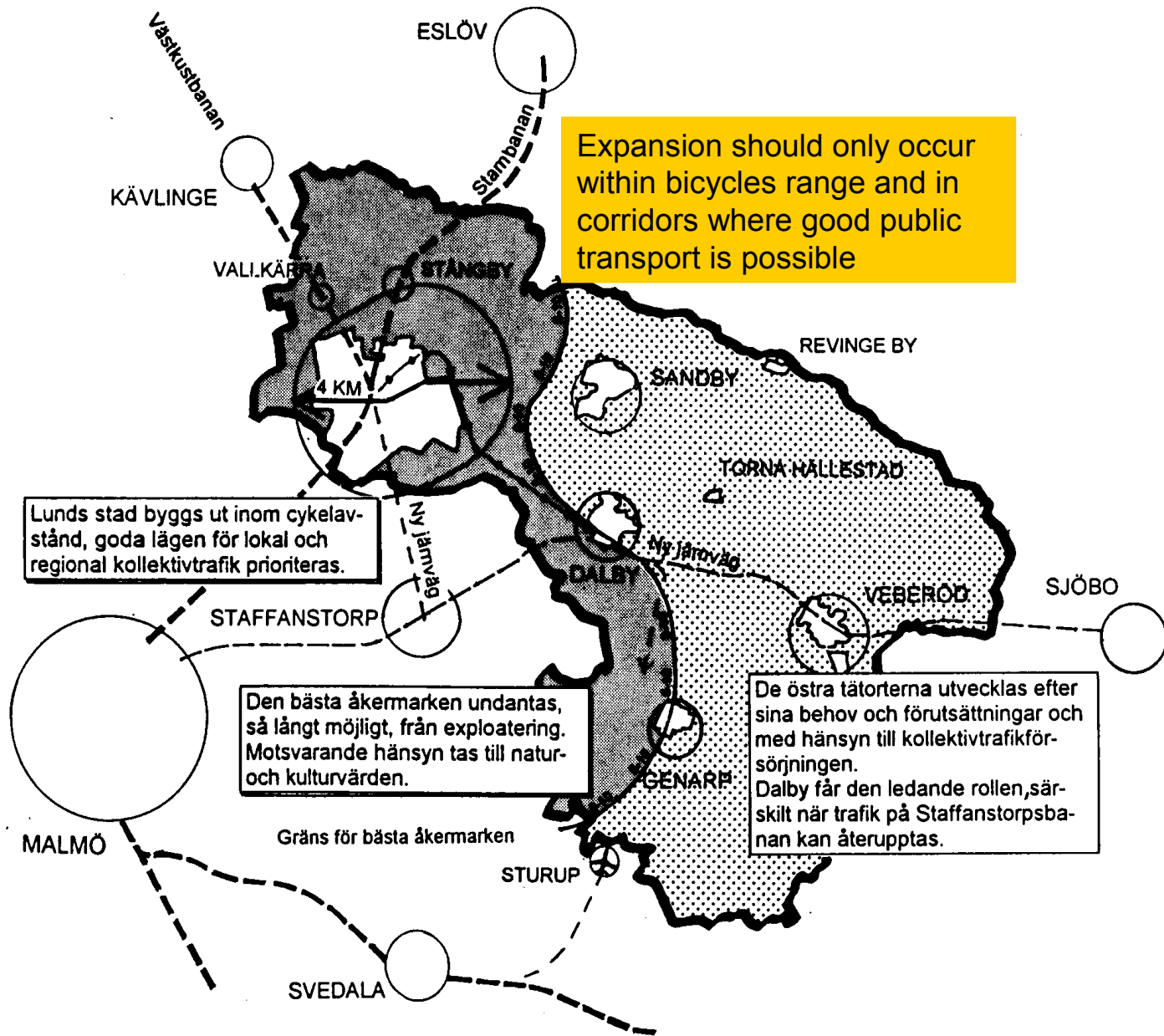
Lund NE

- Max-lab – National Laboratory for Synchrotron Radiation in Sweden
- ESS – European Spallation Source
- Brunnshög





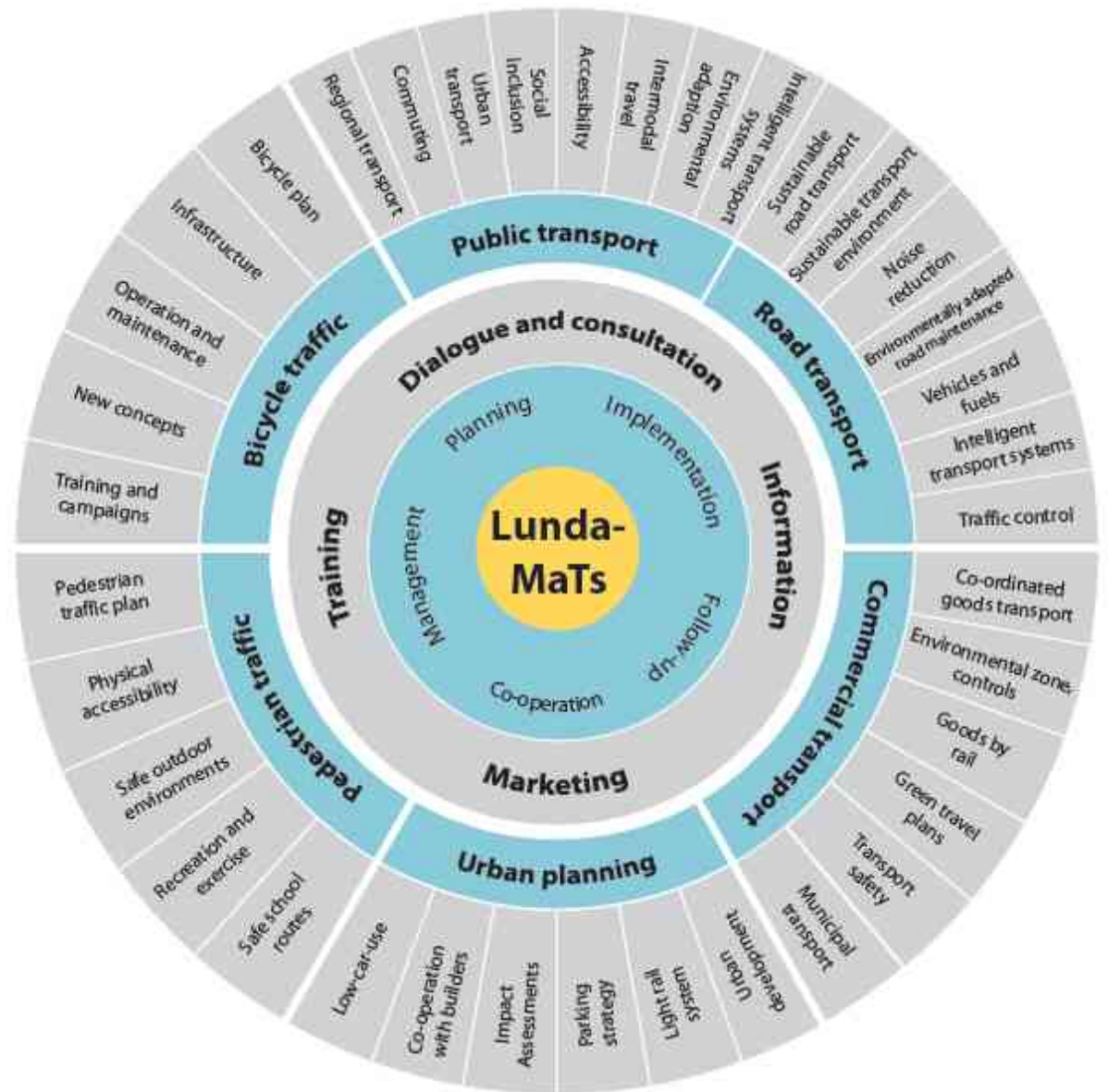
General plan ÖPL 98 - synthesis





LundaMaTs

strategy for a sustainable transport system for 2030





Developing infrastructure for public transport is necessary to attract more passengers and reduce car transport. We have seen a **big potential** to increase the number of trips by public transport to the big working sites in Lund.





LundaMaTs - example of projects



- **The Lund link**
20 million €
- **Bicycle city**
8,9 million €
- **Mobility Office and
Environmentally sound car traffic**
2,3 million €
- **Urban planning for reduced car use**
0,5 million €



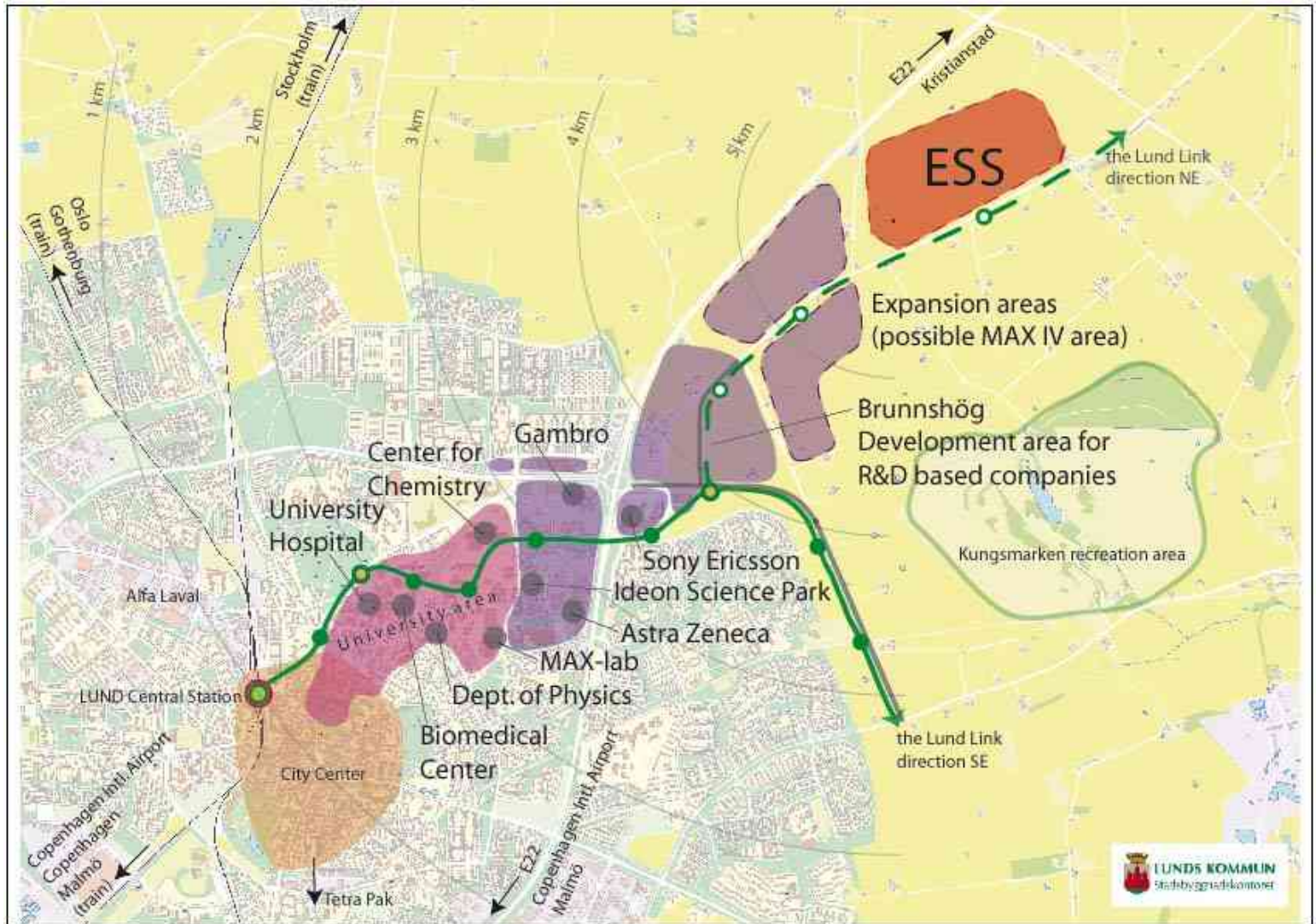


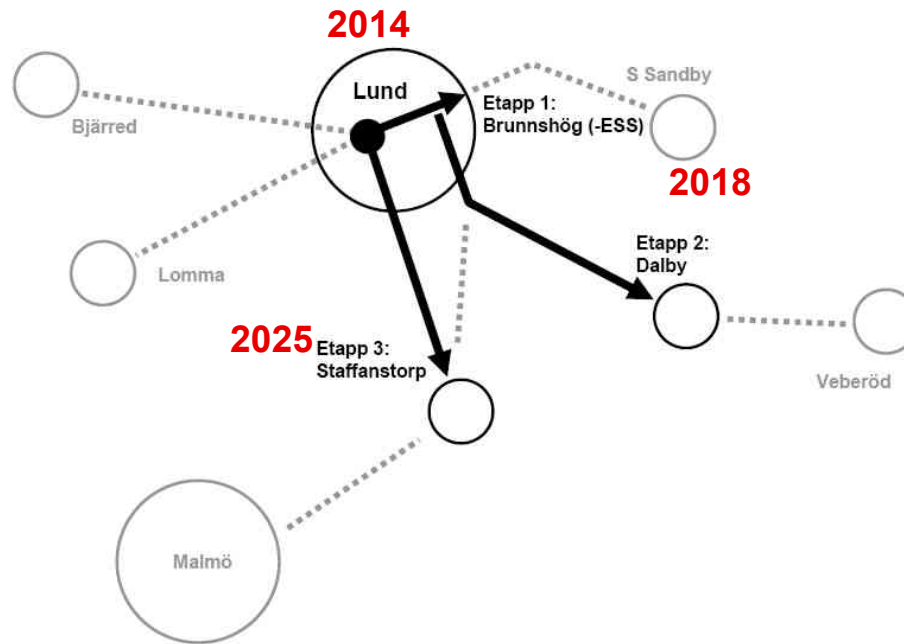
Lundalänken - “the Lund link”, is a prioritised bus link from Lund central station through the biggest working area in the region where among others the Hospital, the University, the science park Ideon, new residential areas and the development area Brunnshög are located. The link is 6 km long and is used both by local green buses and regional yellow buses.





The Lund Link





Our vision is that Lundalänken shall be a part of a completely connected system in the southwest of Skåne, based on a modern tramway system.





Klinikgatan
A

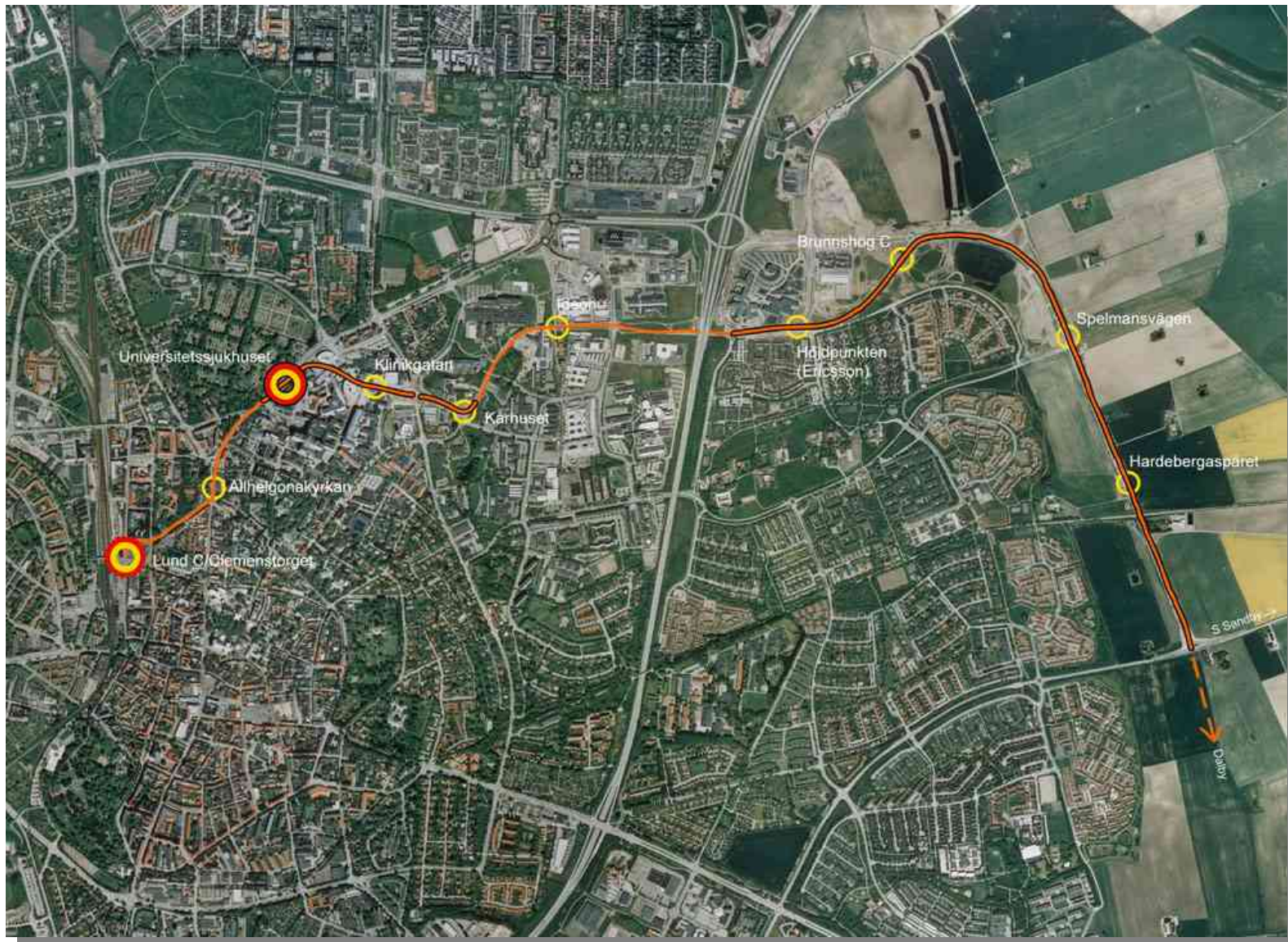
Lundalänken

 **6** Klånas-LTH
Lund

 **20** Lundalänken
Brunshög C

 **166** Lundalänken
S Sandby

Skidneträffen **z240**





LUND

Klinikgatan

A

Lundalänken

6 Klänsen-LTH
Lund

20 Lundalänken
Brumbyg C

166

Lundalänken
S Sandby

Skånetrafiken z240





Klinikgatan
A

Lundalänken

6 Klävsjöen-LTH
Lund
20 Lundalänken
Branshög C

166 Lundalänken
S Sandby

Skånetrafiken z240

Prioritised in crossings





Good design

Klinikgatan
A

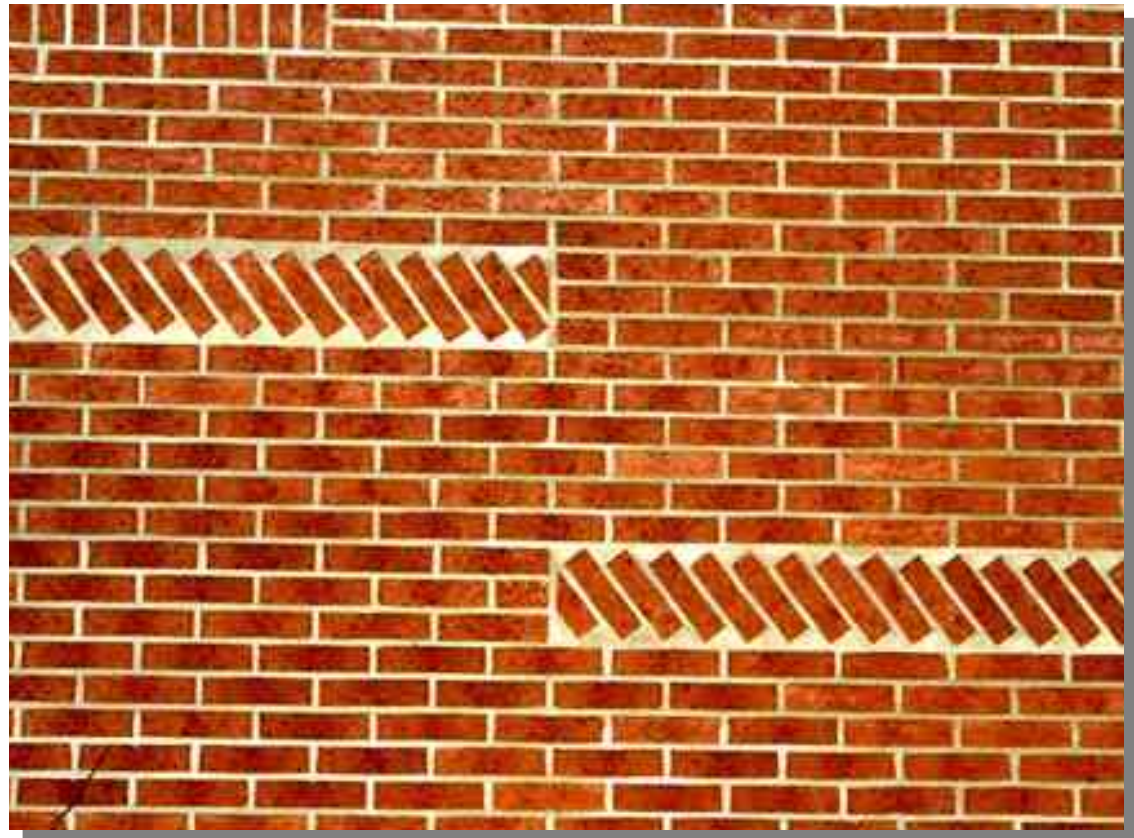
Lundalänken

6 Kårlunden-LTH
Linné

20 Lundalänken
Brannhög C

166 Lundalänken
S Sandby

Skånestråken z240





In rush hour there is a bus leaving Lund C every fifth minute

Klinikgatan
A

Lundalänken

6 Kläppen-LTH
Lund

20 Lundalänken
Bromshög C

166 Lundalänken
Södra Sandby

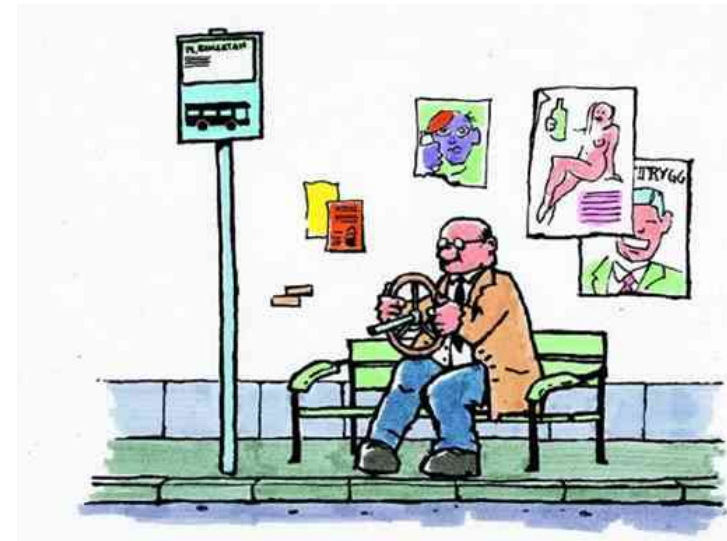
Skånetrafiken z240





Mobility management

Just before **the start** of the traffic 2003 we made a massive information campaign on the working places in the area. We talked directly to people about what the new bus lane could give them. The mix of hard infrastructure measures and soft measures, mobility management, we think is the key to success.





The Lund Link was opened in 2003 with the aim of improving the competitiveness of public transport

Since the start 2003 the number of passengers has been doubled. We believe that 20 % of them was former car drivers.





The project was build from 1998 to 2003 ant he cost was 20 million euro. It was financed by the government, the county and the City of Lund who have taken approximately 60 % of the total cost.

